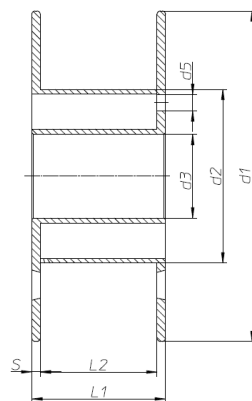
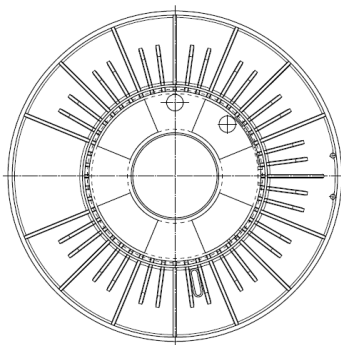


# Spule / Reel SD 200/52-80 K



**Maße / dimensions :**



d 1	[ mm ]	200	7,9	[inch]
d 2	[ mm ]	105	4,1	[inch]
			0,0	
d 3	[ mm ]	50,5	2,0	[inch]
d 5	[ mm ]	10	0,4	[inch]
L 1	[ mm ]	80	3,1	[inch]
L 2	[ mm ]	70	2,8	[inch]
s	[ mm ]	5	0,2	[inch]
V	[ cm <sup>3</sup> ]	1592	97,3	[inch <sup>3</sup> ]

**Material / material:**

Spulen aus PS / ABS  
andere Materialien auch transparent auf Anfrage

/ spools made of PS / ABS  
/ other material specifications available  
on request, as well transparent

**Einsatzzweck / application:**

Spulen für 1 Kg 3 D-Druckfilamente  
aus ABS oder PLA im Ø 0,8 bis Ø 3,0 mm.

/ reels for one Kg 3D-print filaments made of  
ABS or PLA for Ø 0,8 to Ø 3,0 mm.

**Verpackung / packaging:**

700 Stck. auf Einwegpalette 100 x 120 x 185 cm

/ 700 pcs. per pallet; dim. 39 x 47 x 73 inch

Häfner & Krullmann GmbH  
Plastic Processors

Krentrufer Straße 7-15  
33818 Leopoldshöhe (Germany)

Tel. +49 (0)5208 7004-0  
Fax +49 (0)5208 7004-155

info@hafner-spools.com  
www.hafner-spools.com