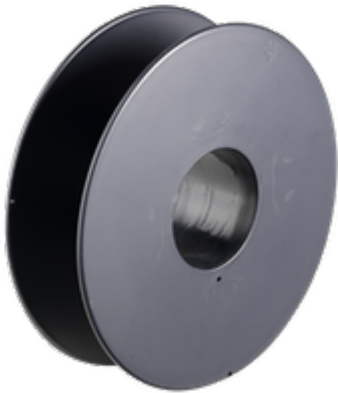


REEL AD 200

11 Reels for steel cord, bare wire, stranded wire



Reusable

Winding material : Staple wire, Low carbon wires

Material : PS

Standard winding volume : 1350 cm³

Central bore Ø : 65 mm

Catalogue categorization: 11

TECHNICAL DATA - SPOOLS

Spools

Flange Ø	Barrel Ø	Central bore Ø	Width	Winding width	Flange thickness	Winding-volume	Central bore Ø tapered part	Drive-hole/pin	Drive-distance
d1 [mm]	d2 [mm]	d3 [mm]	L1 [mm]	L2 [mm]	S [mm]	V [cm ³]	d4 [mm]	d5 [mm]	E1 [mm]
200	75	65	58	50	4	1350			

PACKAGING

Designation	Cardboard box	Cardboard box weight	Cardboard box Outside Deminions	Pallets	Pallet weight	Pallet's external dimensions
	piece	kg	cm	piece	kg	cm
Reel AD 200	60	17.4	80x40x37	-	-	

Designation	Cardboard box	Cardboard box weight	Cardboard box Outside Deminsions	Pallets	Pallet weight	Pallet's external dimensions
	piece	kg	cm	piece	kg	cm

Important:

If pallet packaging is indicated, this is the preferred method of packing the spools. Please note that the pallets must not be stored in direct sunlight, as the heat build-up may cause the plastic to warp permanently.

TECHNICAL DRAWING

Spools

