

REEL 315/500-E

19 Reels and reel containers, 05 Spools with tapered barrel



Single-use

Winding material : Enamelled copper wire

Material : PS, ABS

Standard winding volume : 19768 cm³

Central bore Ø : 100 mm

Catalogue categorization: 19 , 05

DIN EN 60264-3-1 Delivery spools with tapered barrel - Dimensions

DIN EN 60264-3-3 single use spools with tapered barrel - Spezifikation

TECHNICAL DATA - SPOOLS

Spools

Flange Ø	Barrel Ø	Central bore Ø	Width	Winding width	Flange thickness	Winding-volume	Central bore Ø tapered part	Drive-hole/pin	Drive-distance
d1 [mm]	d2 [mm]	d3 [mm]	L1 [mm]	L2 [mm]	S [mm]	V [cm ³]	d4 [mm]	d5 [mm]	E1 [mm]
315	180	100	500	425	37.5	19768	106	16 x 2	62.5

Container

Designation	Outer Ø	Overall height	Inner Ø bottom	Inner Ø top	
	d1 max	h1 max	d2	d3	h2 min
Container VB 315/500	400	630	338	355	63

Spool in container

Designation	Flange Ø bottom	Barrel Ø bottom	Flange Ø top	Barrel Ø top	Overall height	Winding width	Distance to surface	Flange thickness top
	d1	d2	d3	d4	L1	L2	t2	S1
Reel 315/500-E	315	200	300	180	500	425	20	37.5

PACKAGING

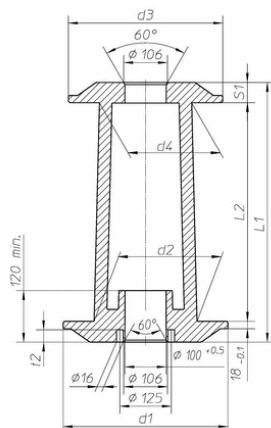
Designation	Cardboard box	Cardboard box weight	Cardboard box Outside Deminsions	Pallets	Pallet weight	Pallet's external dimensions
	piece	kg	cm	piece	kg	cm
Reel 315/500-E	5	14.8	66x54x67	48	134	100x120x215
Container VB 315/500	0	0		27	140	114x114x200

Important:

If pallet packaging is indicated, this is the preferred method of packing the spools. Please note that the pallets must not be stored in direct sunlight, as the heat build-up may cause the plastic to warp permanently.

TECHNICAL DRAWING

Spools



Container

