



REEL K 50

03 Cylindrical barrelled delivery spools IEC 60264-2-1



Reusable

Winding material : bare wires, Enamelled copper wire, Jewellery wire

Material : PS

Standard winding volume : 44 cm³

Central bore Ø : 11 mm

Catalogue categorization: 03

DIN EN 60264-2-1 Cylindrically barrelled delivery spools - Dimensions

DIN EN 60264-2-2 Reusable spool with cylindrically barrelled delivery - Spezifikation

TECHNICAL DATA - SPOOLS

Spools

Flange Ø	Barrel Ø	Central bore Ø	Width	Winding width	Flange thickness	Winding-volume	Central bore Ø tapered part	Drive-hole/pin	Drive-distance
d1 [mm]	d2 [mm]	d3 [mm]	L1 [mm]	L2 [mm]	S [mm]	V [cm ³]	d4 [mm]	d5 [mm]	E1 [mm]
50	32	11	50	38	6	44	15		

Container

Designation	Outer Ø	Overall height	Inner Ø bottom	Inner Ø top	
	d1 max	h1 max	d2	d3	h2 min
Container VD 50	55	54	-	-	-



PACKAGING

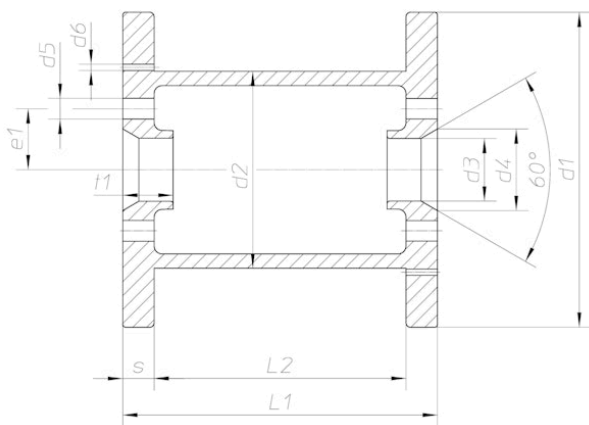
Designation	Cardboard box	Cardboard box weight	Cardboard box Outside Deminsions	Pallets	Pallet weight	Pallet's external dimensions
	piece	kg	cm	piece	kg	cm
Reel K 50	648	15.30	45x40x43	0	-	
Container VD 50	600	9.10	70x49x33	0	0	

Important:

If pallet packaging is indicated, this is the preferred method of packing the spools. Please note that the pallets must not be stored in direct sunlight, as the heat build-up may cause the plastic to warp permanently.

TECHNICAL DRAWING

Spools



Container

