



# REEL 160-E

## 03 Cylindrical barrelled delivery spools IEC 60264-2-1



Single-use

Winding material : Extruded cables, Staple wire, Low carbon wires

Material : PS

Standard winding volume : 1568 cm<sup>3</sup>

Central bore Ø : 22 mm

Catalogue categorization: 03

DIN EN 60264-2-1 Cylindrically barrelled delivery spools - Dimensions

DIN EN 60264-2-3 Single-use spool with cylindrically barrelled delivery - Spezification

## TECHNICAL DATA - SPOOLS

### Spools

Flange Ø	Barrel Ø	Central bore Ø	Width	Winding width	Flange thickness	Winding-volume	Central bore Ø tapered part	Drive-hole/pin	Drive-distance
d1 [mm]	d2 [mm]	d3 [mm]	L1 [mm]	L2 [mm]	S [mm]	V [cm <sup>3</sup> ]	d4 [mm]	d5 [mm]	E1 [mm]
160	100	16 - 22	160	128	16	1568	34	2x13	32

### Container

Designation	Outer Ø	Overall height	Inner Ø bottom	Inner Ø top	
	d1 max	h1 max	d2	d3	h2 min
Container VD 160	169	167	-	-	-



## PACKAGING

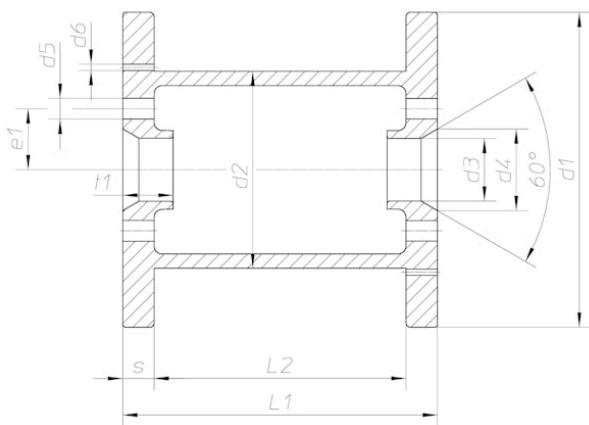
Designation	Cardboard box	Cardboard box weight	Cardboard box Outside Deminsions	Pallets	Pallet weight	Pallet's external dimensions
	piece	kg	cm	piece	kg	cm
Reel 160-E	63	17.50	79,4 x 54,4 x 51,8	540	150	85x120x185
Container VD 160	42	11.00	80x54x52	0	0	

### Important:

If pallet packaging is indicated, this is the preferred method of packing the spools. Please note that the pallets must not be stored in direct sunlight, as the heat build-up may cause the plastic to warp permanently.

## TECHNICAL DRAWING

### Spools



### Container

