



REEL 250 E

19 Reels and reel containers, 03 Cylindrical barrelled delivery spools IEC 60264-2-1



Single-use

Winding material : Low carbon wires, Extruded cables

Material : PS

Standard winding volume : 4637 cm³

Central bore Ø : 22 mm

Catalogue categorization: 19 , 03

DIN EN 60264-2-1 Cylindrically barrelled delivery spools - Dimensions

DIN EN 60264-2-3 Single-use spool with cylindrically barrelled delivery - Spezifikation

TECHNICAL DATA - SPOOLS

Spools

Flange Ø	Barrel Ø	Central bore Ø	Width	Winding width	Flange thickness	Winding-volume	Central bore Ø tapered part	Drive-hole/pin	Drive-distance
d1 [mm]	d2 [mm]	d3 [mm]	L1 [mm]	L2 [mm]	S [mm]	V [cm ³]	d4 [mm]	d5 [mm]	E1 [mm]
250	160	16 - 22	200	160	20	4637	34	2x13	32

Container



Designation	Outer Ø	Overall height	Inner Ø bottom	Inner Ø top	
	d1 max	h1 max	d2	d3	h2 min
Container VB 250	304	273	-	-	-

PACKAGING

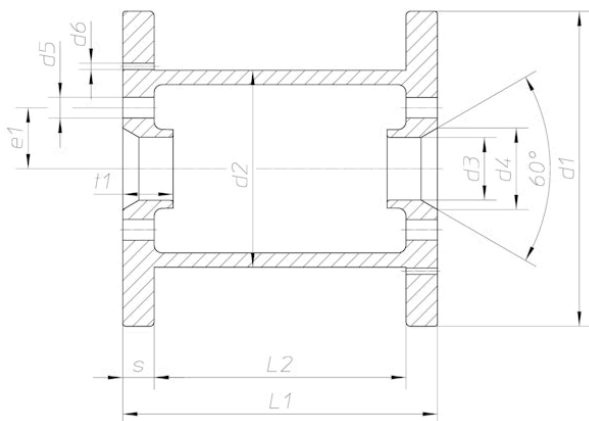
Designation	Cardboard box	Cardboard box weight	Cardboard box Outside Deminsions	Pallets	Pallet weight	Pallet's external dimensions
	piece	kg	cm	piece	kg	cm
Reel 250 E	18	14.80	68x44x71	240	184	106x129x177
Container VB 250	0	0		96	154	112x120x188

Important:

If pallet packaging is indicated, this is the preferred method of packing the spools. Please note that the pallets must not be stored in direct sunlight, as the heat build-up may cause the plastic to warp permanently.

TECHNICAL DRAWING

Spools



Container

