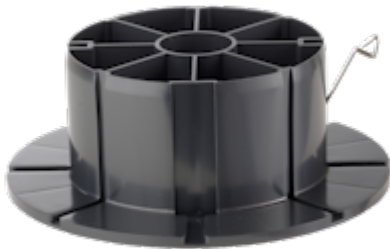




# ADAPTOR K 300

06 Welding wire reels



Reusable

Winding material : Welding wire

Material : ABS

Central bore  $\varnothing$  : 50.50 mm

Catalogue categorization: 06

## TECHNICAL DATA - SPOOLS

### Spools

Flange $\varnothing$	Barrel $\varnothing$	Central bore $\varnothing$	Width	Winding width	Flange thickness	Winding-volume	Central bore $\varnothing$ tapered part	Drive-hole/pin	Drive-distance
d1 [mm]	d2 [mm]	d3 [mm]	L1 [mm]	L2 [mm]	S [mm]	V [cm <sup>3</sup> ]	d4 [mm]	d5 [mm]	E1 [mm]
277	185	50.5	102						

## PACKAGING

Designation	Cardboard box	Cardboard box weight	Cardboard box Outside Deminsions	Pallets	Pallet weight	Pallet's external dimensions
	piece	kg	cm	piece	kg	cm
Adaptor K 300	0	-		105	80	80x120x123



Designation	Cardboard box	Cardboard box weight	Cardboard box Outside Deminsions	Pallets	Pallet weight	Pallet's external dimensions
	piece	kg	cm	piece	kg	cm

**Important:**

If pallet packaging is indicated, this is the preferred method of packing the spools. Please note that the pallets must not be stored in direct sunlight, as the heat build-up may cause the plastic to warp permanently.

## TECHNICAL DRAWING

### Spools

