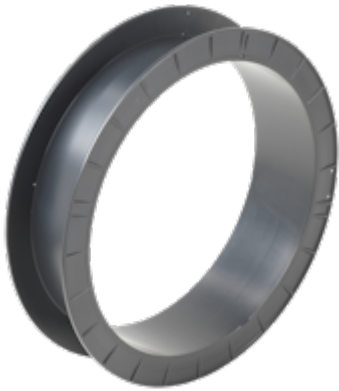




REEL SH 370/90 K

06 Welding wire reels



Reusable

Winding material : Welding wire, Metal strip, metal tape, Tapes

Material : PS, ABS

Standard winding volume : 2564 cm³

Central bore Ø : 305 mm

Catalogue categorization: 06

DIN EN ISO 544

TECHNICAL DATA - SPOOLS

Spools

Flange Ø	Barrel Ø	Central bore Ø	Width	Winding width	Flange thickness	Winding-volume	Central bore Ø tapered part	Drive-hole/pin	Drive-distance
d1 [mm]	d2 [mm]	d3 [mm]	L1 [mm]	L2 [mm]	S [mm]	V [cm ³]	d4 [mm]	d5 [mm]	E1 [mm]
370	310	305	88	80	4	2564			

PACKAGING

Designation	Cardboard box	Cardboard box weight	Cardboard box Outside Deminsions	Pallets	Pallet weight	Pallet's external dimensions
-------------	---------------	----------------------	----------------------------------	---------	---------------	------------------------------



Designation	Cardboard box	Cardboard box weight	Cardboard box Outside Deminsions	Pallets	Pallet weight	Pallet's external dimensions
-------------	---------------	----------------------	----------------------------------	---------	---------------	------------------------------

	piece	kg	cm	piece	kg	cm
Reel SH 370/90 K	36	18.10	82x76x77	180	93	105x120x180

Important:

If pallet packaging is indicated, this is the preferred method of packing the spools. Please note that the pallets must not be stored in direct sunlight, as the heat build-up may cause the plastic to warp permanently.

TECHNICAL DRAWING

Spools

