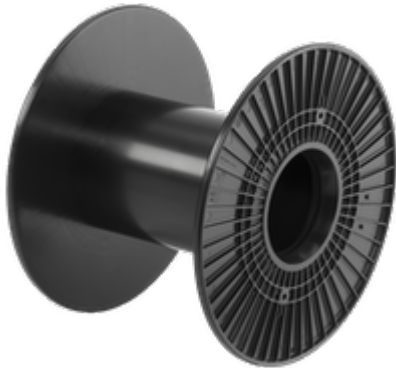


# REEL EM 400/127-305

08 LM / EM reels, 07 General reels



Reusable

Winding material : data cable, power cables, Extruded cables

Material : ABS

Standard winding volume : 28061 cm<sup>3</sup>

Central bore Ø : 127 mm

Catalogue categorization: 08 , 07

DIN 46395

## TECHNICAL DATA - SPOOLS

### Spools

Flange Ø	Barrel Ø	Central bore Ø	Width	Winding width	Flange thickness	Winding-volume	Central bore Ø tapered part	Drive-hole/pin	Drive-distance
d1 [mm]	d2 [mm]	d3 [mm]	L1 [mm]	L2 [mm]	S [mm]	V [cm <sup>3</sup> ]	d4 [mm]	d5 [mm]	E1 [mm]
400	180	16 - 127	305	50 - 280	12.5	5011 - 28061	143.5		

## PACKAGING

Designation	Cardboard box	Cardboard box weight	Cardboard box Outside Deminsions	Pallets	Pallet weight	Pallet's external dimensions

Designation	Cardboard box	Cardboard box weight	Cardboard box Outside Deminsions	Pallets	Pallet weight	Pallet's external dimensions
-------------	---------------	----------------------	----------------------------------	---------	---------------	------------------------------

	piece	kg	cm	piece	kg	cm
Reel EM 400/127-305	0	-		54	181	100x120x185

**Important:**

If pallet packaging is indicated, this is the preferred method of packing the spools. Please note that the pallets must not be stored in direct sunlight, as the heat build-up may cause the plastic to warp permanently.

## TECHNICAL DRAWING

### Spools

